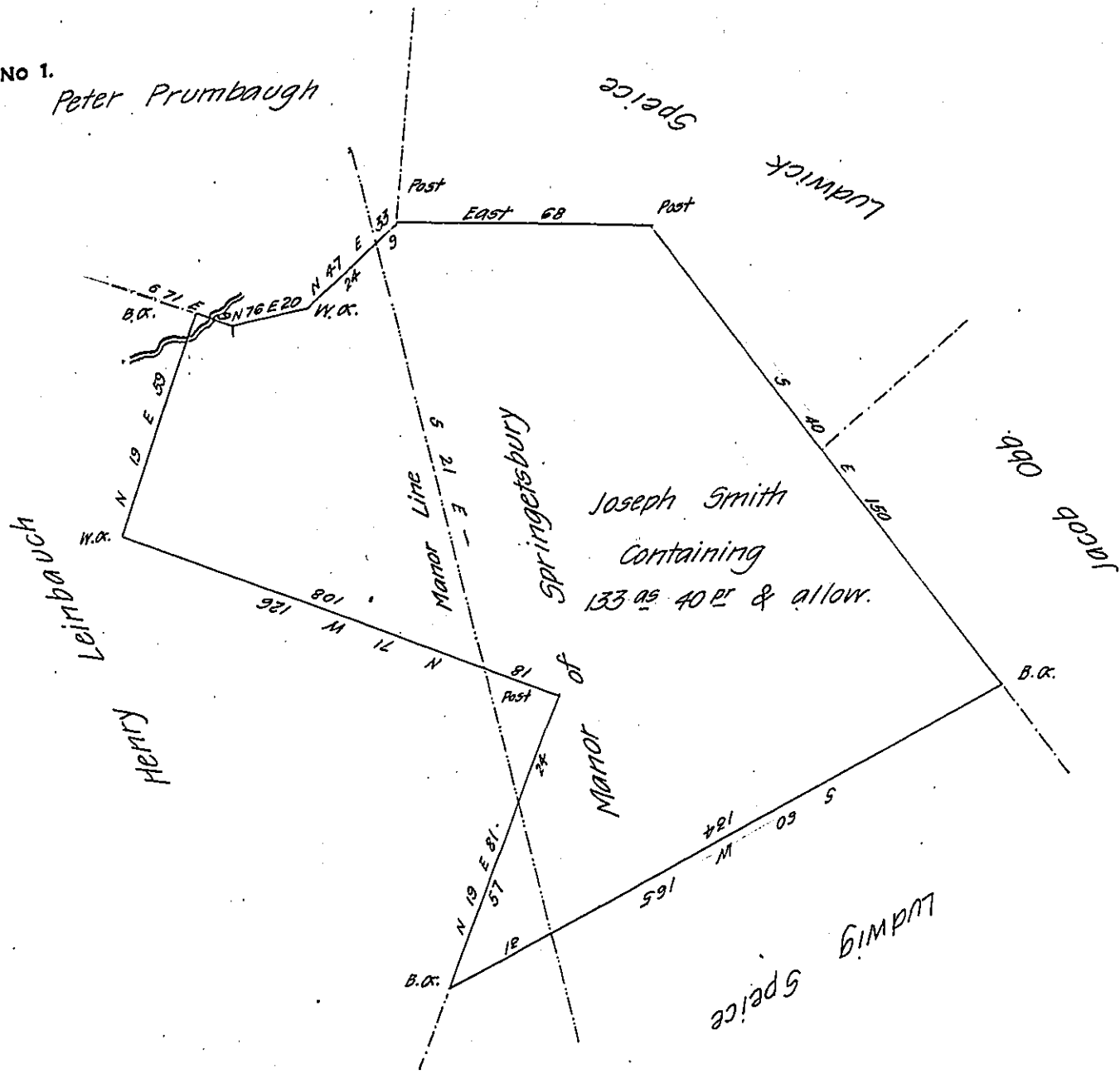


FORM NO 1.

Peter Prumbaugh



Situate in Dover township in the County of York Containing within the black lines 133^{as} 40 perches and the usual allowance &c. Originally Surveyed by Charles Lukens late D.S. in pursuance of a Warrant granted to Joseph Smith for 100^{as} dated the 11th day of June 1763 - 96^{as} 89^{pr} &c.^a of the above tract within the Manor of Springettsbury - Calculated examined &c.^a the 20th day of December 1828 and Returned per Contract.

Owned &c. by the Widow & Heirs of Martin Ziegler dec^d

Danl Small D.S.

To Gabriel Hiester Esq^r

Surveyor General.

IN TESTIMONY that the above is a copy of the original remaining on file in the Department of Internal Affairs of Pennsylvania, made conformably to an Act of Assembly approved the 16th day of February, 1833, I have hereunto set my Hand and caused the Seal of said Department to be affixed at Harrisburg, this twenty fourth day of April 1908

Henry H. ...
Secretary of Internal Affairs.